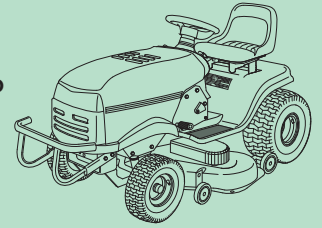




Setting the Standard

for **Mowers, Tractors**
& other Industrial applications

with Briggs & Stratton air cooled engines, 7 thru 18HP



FEATURES & BENEFITS

• **Engine Tested**

All units are validated on live engine, exceeding 6000 cycle starts.

• **New Profile Gears**

As per the latest Briggs & Stratton upgrade, to reduce flywheel wear and ensure smooth engagement.

• **Exact Housing Fitting**

Housings are verified for application fit, using specialized software and a digital inspection system to avoid unnecessary returns.

• **Ground Strap**

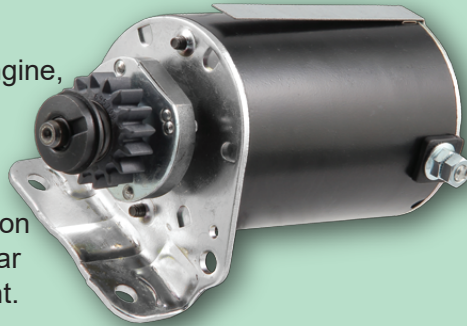
Like the OE, each unit is provided with its own ground strap to be used as needed.

• **Serrated B+ Nut Face**

This feature prevents the battery cable from slipping during the starter installation.

• **ROHS Compliant**

Our units meet the "Restriction of Hazardous Substances"(ROHS) standard, in force in many countries.



213-03104

12V, 16T, CCW, PMDD
108mm Field case

Used on:

- Briggs & Stratton
- Cub Cadet
- Generac
- John Deere
- Scotts
- Toro

w/ Briggs & Stratton Eng.

Replaces:

Briggs & Stratton

393499, 394943, 490420, 490920,
494198, 494990, 497401, 499521,
795121

Cub Cadet:

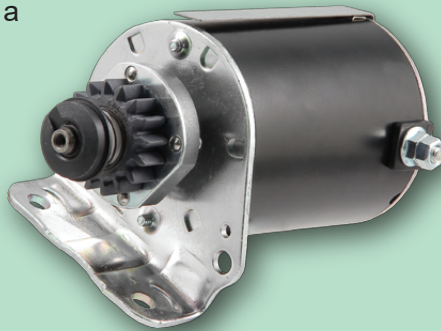
BS499521

John Deere:

LG499521, MIA11175, SE501860

Toro:

784340



213-07103

12V, 16T, CCW, PMDD
97mm Field case

Used on:

- Briggs & Stratton
- Cub Cadet
- John Deere
- Sabo
- Toro

w/ Briggs & Stratton Eng.

Replaces:

Briggs & Stratton

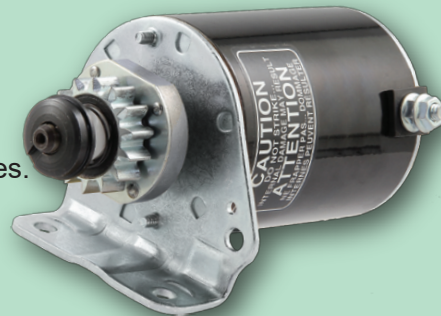
391423, 392744, 392749, 394805,
435303, 491766, 494325, 497595,
691262, 693054

John Deere:

AM37352, AM39137, AM39285,
LG497595, LG691262, MIU13772,
SE501880

United Technologies:

SM01965



213-07122

12V, 14T, CCW, PMDD
97mm Field case, Steel Gear*

Used on:

- Briggs & Stratton
- Cub Cadet
- John Deere
- New Holland
- Sabo
- Scotts
- Toro

w/ Briggs & Stratton Eng.

Replaces:

Briggs & Stratton

693551

John Deere:

LG693551, MIA13018, SE501848

New Holland:

BS693551

*for applications with steel flywheel



170314

CANADA

Dixie Electric Ltd.
517 Basaltic Road
Concord, ON.
Canada L4K 4W8

Tel.: 905-879-0533 800-461-5799
Fax: 905-879-0532
E-Mail: sales@dixie-electric.com
Web Site: www.dixie-electric.com



Setting the Standard

U.S.A.

Dixie Electric Inc.
5600 Pioneer Creek Drive, Suite D
Maple Plain, MN 55359
U.S.A.

Tel.: 763-475-6629 800-478-0608
Fax: 763-475-6635 800-392-8719
E-Mail: mn.sales@dixie-electric.com
Web Site: www.dixie-electric.us

